

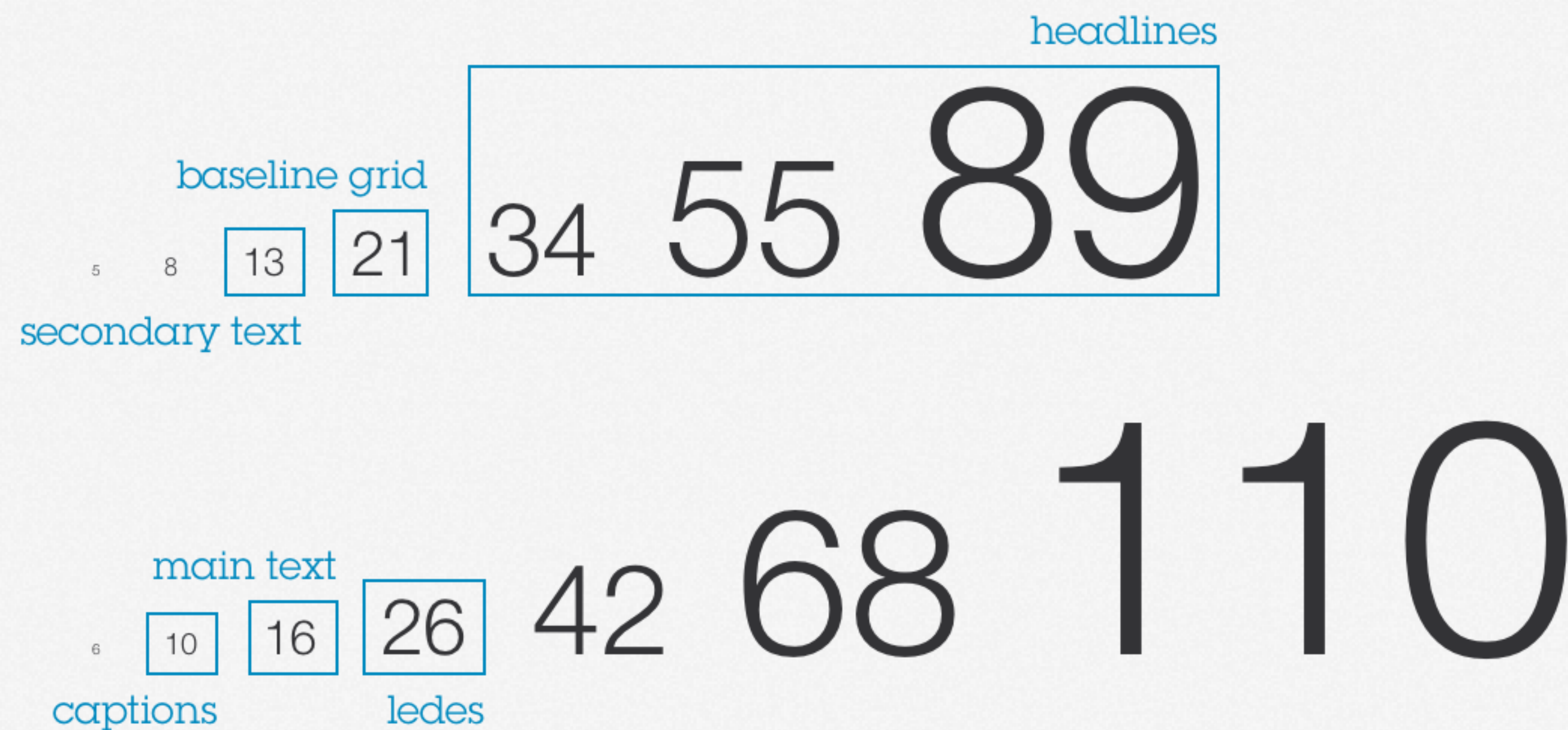
Monarch

Visual Design Specification
(version 3, November 7, 2012)

Typography

Typographic Scale

The typographic scale is based on the Fibonacci series (a $1:\varphi$ ratio), and one variation on the series:



Typography

Baseline Grid

A baseline grid is a vertical scale on which type is set and on which page elements are aligned. This alignment gives the design harmony and rhythm

Monarch uses a 21pt baseline grid that begins at the top of the page. Every 21pts there is an imaginary line (though they are visualized here in light blue). When laying out the page, all elements are aligned with these baselines.

There have been many articles recently advocating a baseline grid (sometimes called a vertical rhythm) in web design. Unfortunately, these articles interpret baseline grids through the lens of the w3c definition of line-height in the CSS specification. The w3c interpretation is incorrect.

Aa Bb Cc Dd Ee Ff Gg
Hh Ii Jj Kk Ll Mm Nn ← BASELINE

The blue bracket in the above illustration illustrates the traditional definition of line height as the distance from the baseline of one line of text to the baseline of the next line of text. The w3c defines line-height as the height of the “line boxes” as specified within the font itself. In practice, this ends up being centered on the text, as illustrated by the orange bracket.

Typographic alignment
w3c alignment

This difference in definitions seems small, but as illustrated above, it leads to situations where things that should be aligned are not. Monarch should strive to be a beacon of good design within IBM. As such, we should attempt to use baseline grids as they have been used for centuries.

Typography

Baseline Grid

You may have noticed that even while I was going all “blah blah blah” about baseline grids, that not all of my lines of text magically aligned themselves to these lines.

Nothing slips past you! One of the things about baseline grids is that often you are going to have type that is larger than the baseline grid. The text in the lede above is 26pt. If it has a line height of 21pt,

we would have a legibility problem that would only worsen as text got larger.

So when we deal with text larger than the baseline, as we will in Monarch, we set it on grids that are related to the main baseline grid. Since 21 is 7×3 , we can use 7 (or 3, but that's less practical) to create these related grids. This method will allow the larger text will snap back to the baseline grid on a regular basis, as it does at the top and bottom of the lede on this page, where it uses as line height of 35, which is $21 + 7 + 7$.

In typographic notation, the shorthand 16/21 is used to define font size and line height, where the font size is 16pt, and the line height is 21pt. This shorthand is something that the w3c did get right when they were defining the CSS font shorthand property.

Typography

Typefaces

Herb Lubalin, an American graphic designer, designed Lubalin Graph in 1974. Along with Bodoni, Helvetica Neue, and Janson, it is one of the typefaces used to brand IBM. It is characterized by its “stable friendliness” and its ability to present facts and figures with clarity.

In Monarch, Lubalin Graph is primarily used for headlines

$\frac{20}{200}$	E	$\frac{200 \text{ FT}}{61 \text{ M}}$	1
$\frac{20}{100}$	F P	$\frac{100 \text{ FT}}{30.5 \text{ M}}$	2
$\frac{20}{70}$	T O Z	$\frac{70 \text{ FT}}{21.3 \text{ M}}$	3
$\frac{20}{50}$	L P E D	$\frac{50 \text{ FT}}{15.2 \text{ M}}$	4
$\frac{20}{40}$	P E C F D	$\frac{40 \text{ FT}}{12.2 \text{ M}}$	5
$\frac{20}{30}$	E D F C Z P	$\frac{30 \text{ FT}}{9.14 \text{ M}}$	6
$\frac{20}{25}$	F E L O P Z D	$\frac{25 \text{ FT}}{7.62 \text{ M}}$	7
$\frac{20}{20}$	D E F P O T E C	$\frac{20 \text{ FT}}{6.10 \text{ M}}$	8

Typography

Typefaces

Helvetica Neue is a redrawing of Max Miedinger's typeface Helvetica. Initially named Neue Haas Grotesk, Helvetica was marketed as a symbol of cutting-edge Swiss technology. It quickly went on to become one of the most popular typefaces in the world.

Along with Bodoni, Janson, and Lubalin Graph, Helvetica Neue is one of the four typefaces used to brand IBM.

In Monarch, Helvetica Neue is primarily used in longer text, in its Light weight.

$\frac{20}{200}$

E

$\frac{200 \text{ FT}}{61 \text{ M}}$

1

$\frac{20}{100}$

F P

$\frac{100 \text{ FT}}{30.5 \text{ M}}$

2

$\frac{20}{70}$

T O Z

$\frac{70 \text{ FT}}{21.3 \text{ M}}$

3

$\frac{20}{50}$

L P E D

$\frac{50 \text{ FT}}{15.2 \text{ M}}$

4

$\frac{20}{40}$

P E C F D

$\frac{40 \text{ FT}}{12.2 \text{ M}}$

5

$\frac{20}{30}$

E D F C Z P

$\frac{30 \text{ FT}}{9.14 \text{ M}}$

6

$\frac{20}{25}$

F E L O P Z D

$\frac{25 \text{ FT}}{7.62 \text{ M}}$

7

$\frac{20}{20}$

D E F P O T E C

$\frac{20 \text{ FT}}{6.10 \text{ M}}$

8

Typography

Typefaces

Janson is a digital typeface based on surviving metal type from the Dutch Baroque period believed to have been created by Anton Janson. It is a crisp typeface often used for body copy.

Along with Bodoni, Helvetica Neue, and Lubalin Graph, Janson is one of the four typefaces used to brand IBM.

In Monarch, Janson is primarily used for status messages.

 $\frac{20}{200}$

E

 $\frac{200 \text{ FT}}{61 \text{ M}}$

1

 $\frac{20}{100}$

F P

 $\frac{100 \text{ FT}}{30.5 \text{ M}}$

2

 $\frac{20}{70}$

T O Z

 $\frac{70 \text{ FT}}{21.3 \text{ M}}$

3

 $\frac{20}{50}$

L P E D

 $\frac{50 \text{ FT}}{15.2 \text{ M}}$

4

 $\frac{20}{40}$

P E C F D

 $\frac{40 \text{ FT}}{12.2 \text{ M}}$

5

 $\frac{20}{30}$

E D F C Z P

 $\frac{30 \text{ FT}}{9.14 \text{ M}}$

6

 $\frac{20}{25}$

F E L O P Z D

 $\frac{25 \text{ FT}}{7.62 \text{ M}}$

7

 $\frac{20}{20}$

D E F P O T E C

 $\frac{20 \text{ FT}}{6.10 \text{ M}}$

8

Grid System

Grid A: Full Screen Articles

Width: 100%

Height: 100%

Margins: 42pt (baseline × 2)

Grid System

Grid B: Weighted Columns

Margins: 42pt (baseline × 2)

Left column: 556pt

Those are some pretty...um...unique...numbers. What's up?

φ 's up, of course. These widths are based on the golden section, which is based on φ – of course – because φ is the most awesome number in the world. Much more so than π .

The widths aren't the golden section, because the aspect ratio of the iPad doesn't lend itself to golden section use. Instead, the left column is 61.8% of the available space, and the right column is 38.2% – roughly a 1: φ ratio.

Right column: 342pt

Grid System

Grid C: Equal Columns

Margins: 42pt (baseline × 2)

Left column: 285pt

Ok, so the center column is a bit wider, so they aren't truly equal columns. I lied.

What does this have to do with φ ?

Nothing. I'm not *obsessed*. However, if you're ever at a party, and conversation wanes, you can pull this nugget out of your back pocket: the 1: φ ratio is seen in pineapples, snails, pinecones, sea urchins, sunflowers, and even the human body. That's sure to get the conversation going again.

With knowledge like that, you'd think I'd be invited to more parties, wouldn't you?

Center column: 286pt

Right column: 285pt

Grid System

Grid D: Decreasing Columns

Margins: 42pt (baseline × 2)

Left column: 428pt

This grid is based on the Fibonacci series (and therefore φ). The first three numbers of the Fibonacci series that are used in our typographic scale are 5, 8, and 13. The three columns have the same relationship to one another as these numbers. The left column is $\frac{13}{26}$ of the available width, the center column is $\frac{8}{26}$, and the right is $\frac{5}{26}$.

Center column: 263pt

Right column: 165pt

φ

You're totally obsessed. With φ . So. Weird.

It's not an obsession. Really. It's just design. In order to have a "magazine layout," it's important to look at what makes magazines successful.

Issue after issue, they have all sorts of content – articles, photos, illustrations, ads, colophons, etc. – that they have to quickly lay out in a manner that presents hierarchy, shows a sense of design, helps the user make sense of the content, and carries on the magazine's brand from issue to issue. How do they do this, get the magazine to the printer on time, and still have time to sleep?

They use grid systems. Sure, they aren't sexy, but they are the skeletal framework on which magazines are built. For a grid system to be successful, it has to be more than just some lines arbitrarily placed on a page and arbitrarily chosen type sizes. There must be a relationship between all of the parts that allow them to work together, and yet be flexible. In this case, that relationship is – wait for it – φ .

Hi, φ (giggle)

Seriously though, why φ ? It's a pleasing ratio. It surrounds us wherever we go. Literally – we can't get away from it. It's in our bodies.

The ratio of the body's height to the distance from the top of the head to the fingertips is $1:\varphi$.

The ratio of the distance from the top of the head to the fingertips to the distance from the top of the head to the elbows is $1:\varphi$.

The ratio of the distance from the top of the head to the elbow to the distance of the top of the head to the armpits is $1:\varphi$.

The ratio of the height of the skull to the distance from the top of the head to the bottom of the nose is $1:\varphi$.

And that's not all. The ratio $1:\varphi$ also describes the placement

Color Palette

Color Palette



Main Text

rgb(51,51,54)
#333336



Strokes

rgb(204, 204, 207)
#CCCCCCF



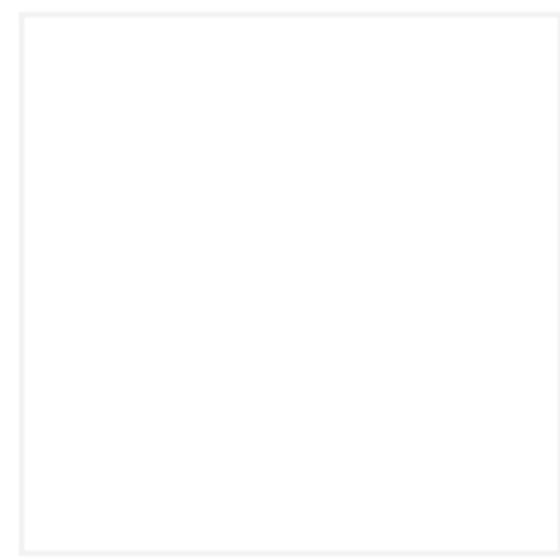
**Comment
Bubbles**

rgb(186, 226, 244)
#BAE2F4



**Secondary
Text**

rgb(102,102,105)
#666669



**Drop Shadows
on Text**

rgb(255, 255, 255)
#FFFFFFF



**Comment
Bubble Stroke**

rgb(123, 192, 218)
#7BC0DA

Color Palette

Color Palette



Links

rgb(0,100, 157)
#00649D



**Text Spot
Color B**

rgb(23,175, 123)
#17AF4B

(use sparingly)



**Text Spot
Color D**

rgb(221, 115, 28)
#DD731C

(use sparingly)



**Text Spot
Color A**

rgb(0, 138, 191)
#008ABF

(use sparingly)



**Text Spot
Color C**

rgb(127, 28, 125)
#7F1C7D

(use sparingly)

Sample Screens

Using four days of actual Connections data.



Monarch Social Reader

for Connections

I want to connect to...

My Company's Server

IBM SmartCloud

Lotus Greenhouse

Log In

Today

Monday, November 5, 2012

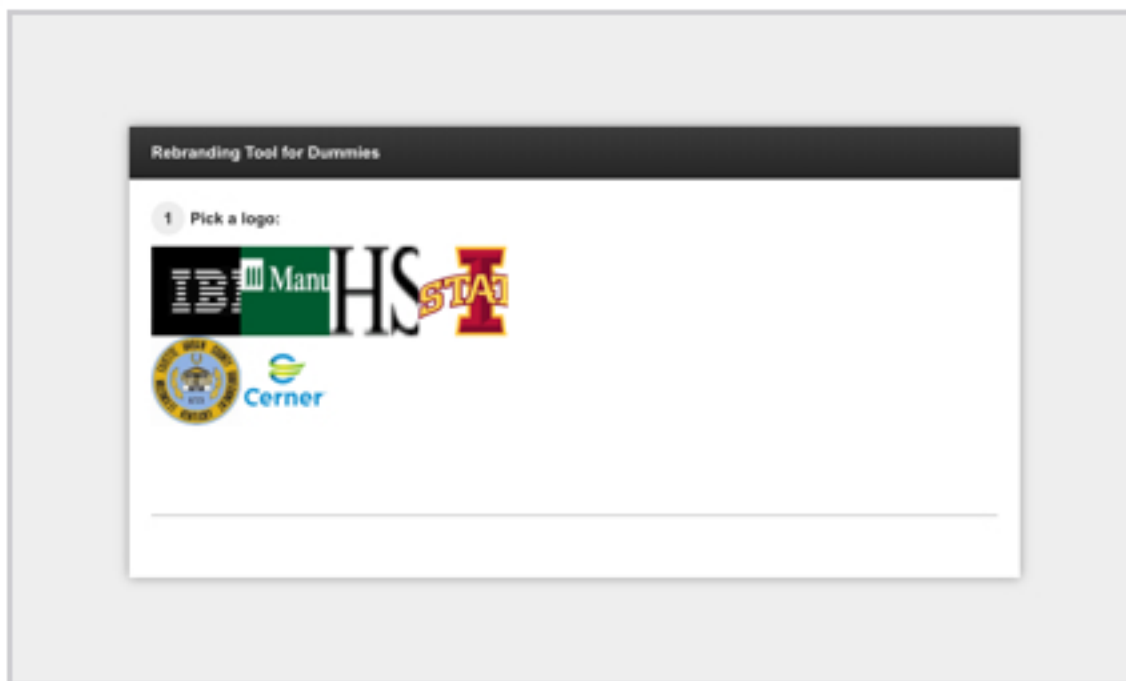


Ed El-Amon

Today at 1:18 PM

Amazing!

in response to...

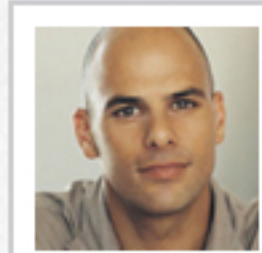
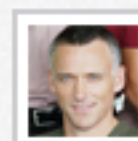


Posted with comment by **Li Pin Tan**
today at 1:18 PM



if you think Connections is difficult, try approving an IT request in maximo. #ITFeedack

Ed Blanks liked **Zachery Cerda's** message today at 11:46 AM



Ed El-Amon

Today at 2:42 AM

Working on Monarch visual design because I – surprise – can't sleep :-\

42

27



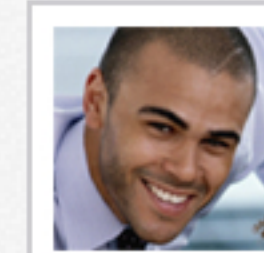
Bill Ranney

Today at 10:49 AM

Ugg. Well, good luck to you... hope we work together again! :)

in response to...

Misha Tompkin In case you haven't heard – I have just over two weeks left as a Connections developer. I've enjoyed working with everyone on this team and...



Daniel Missile

Today at 12:19 AM

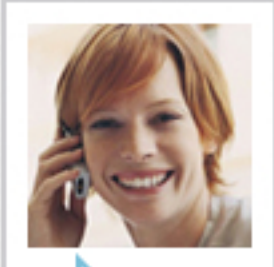
I agree that connections 4 is a big improvement. And the extra overlay is a bit out of place. Also it does not give any feedback that it's loading so for the first few times I did not even know it was loading anything and shut it down before anything popped up.

in response to...

Dina Maroni Even after just a couple of days, I am finding Connections 4, and particularly the streams, way more interactive and dare I say it, social than previous...

Today

Monday, November 5, 2012



Vivian Hanley

Today at 8:14 AM

I've noticed that the first time is extremely slow, and that subsequent fly-outs are much better. If you are doing a demo, you'd definitely want to grease the wheel a bit, as that first time is painfully slow.

in response to...

Li Pin Tan It takes me a very very very long time to load content in the flyout. Does anyone experience the same problem?



Ed El-Amon

Posted a message to Heather Reeds today at 2:03 PM

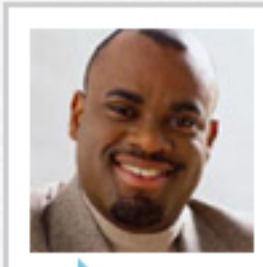
Monarch wireframes are looking good!

28 61



I kind of miss the inline expanding comments from Connections 3. Embedded experience is nice but takes a while to load and is not a continuous experience (my eyes have to constantly switch back and forth between stream and ee popup)

Mali Vo liked **Glenn Cloud's** message today at 2:11 PM



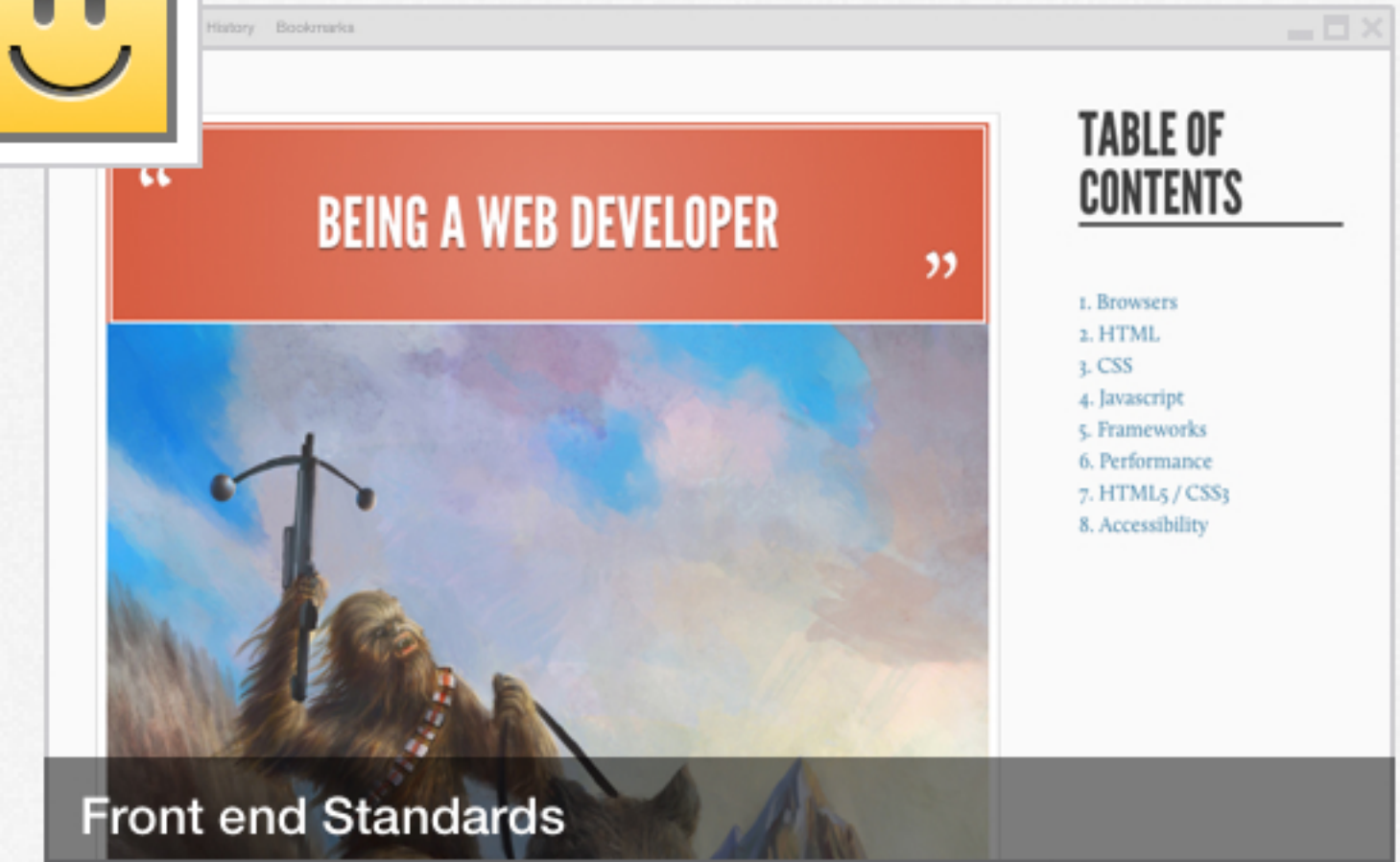
Gardner Raynes

Today at 11:11 AM

+1 absent an easy way to monitor conversations, only the diligent few will bother.

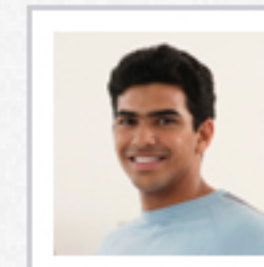
in response to...

Glenn Cloud I still don't get notified when someone comments on a post I commented on. Is that right? Or am I missing it



Good read for anyone that develops (or designs) for the web: <http://www.yellowshoe.com.au/standards>

Dana Vinch liked **Louise Fitzgerald's** message today at 11:10 AM



Zachery Cerda

Today at 10:01 AM

Dentist then drive to Littleton

3 58

Today

Monday, November 5, 2012



Congratulations for being recognized as one of the Best of IBM. Not only were you a top contributor in 2011, but you also model what it means to be an IBMer – by delivering outstanding performance and living our values every day. I know our colleagues will join me in thanking you for all you've done – and all you do – for our clients and for IBM.

Christina Milan liked **Virginia Rometty's** message posted to **Herb Medway** today at 9:22 AM

**Glenn Cloud**

Today at 10:01 AM

Walked by the (always empty except for people wearing bright blue/orange/yellow shirts) Microsoft store and felt semi-obligated to give the Surface a spin...



Just installed Mobile Sametime and Mobile Connections on my iPhone. It's very slick and cute! I'm impressed. Way nicer than a couple of years ago when I tried to run Sametime on my Blackberry.

Ed El-Amon liked **Gail Chao's** message today at 2:21 AM



3



58

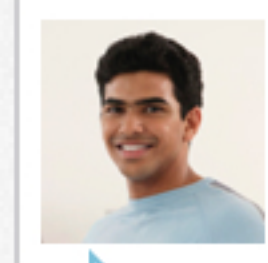
Yesterday

Sunday, November 4, 2012



Back to work after parental leave. Hope my baby (and I) sleep well

Li Pin Tan liked **Samantha Daryn's** message yesterday at 11:28 PM



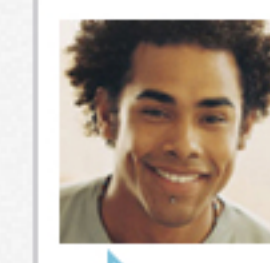
Zachery Cerda

Yesterday at 4:49 PM

Ha! I think it was Peter who put in the Notes request. ;)

in response to...

Stanley Carlow Hi Elaine, I'm not sure who to direct this question to – so I happen to be aiming at you... I am pretty concerned about the new appearance of IBM Connections.



Paul Clemmons

Yesterday at 6:18 PM

Hi All,

I am Paul from IBM Canada! I joined IBM 6 years ago in the asset management team. For the past three years, I have been working for the Canada procurement center. I'm looking forward to meeting new people here from the community...

in response to...

Steve Cho Let everyone know what inspired you to join this community, whether as someone who's gay, lesbian, bi or trans, or as a friend of the community...

Saturday

November 3, 2012



ConnectionsiPad.pdf

Simone Dray liked Zachery Cerda's
file yesterday at 7:10 PM



Friday

November 2, 2012



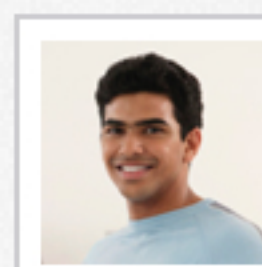
Glenn Cloud

Friday at 9:23 AM

Sorry to hear you still have no power. There has to be something IBM can do with utilities to make things smarter and easier...

in response to...

Betty Zechman #NYSEG finally updated power restoration estimates for #pound-ridge after #hurricane-sandy!...



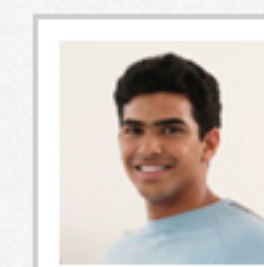
Zachery Cerda

Friday at 11:49 AM

I was on before, but after my monthly restart, I can't get back logged in :(

in response to...

Ling Shin Today is not a good day for Sametime to be down, but is there really ever a good day for Sametime to be down?



Zachery Cerda

Friday at 10:55 PM

I like hearing this as it happens. It gets the word out faster about what clients are telling us.

in response to...

Elaine Johnson On with our Collaboration Council sadly, we had to cancel a face to face meeting in Manhattan so doing it by Smart-Cloud meetin

Friday

November 2, 2012



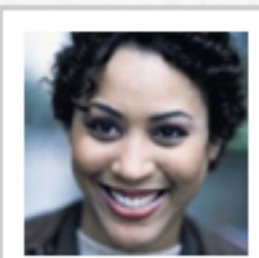
Glenn Cloud

Friday at 9:52 AM

Also, when people ask for things like Jasmine and her dashboard... who is going to try and build something like this as an experiment to see if it's worthwhile and maybe can build a product around it? If product teams are mired down in their own schedules and releases, they aren't going to go and experiment with new stuff...

in response to...

Renata Washington Random Fun Friday Question: for the past 3 days, IBMers have had a chance to jam about our Workplace of the Future. Does anyone have any...



Kristin MacGyver

Friday at 10:55 AM

two things to check...

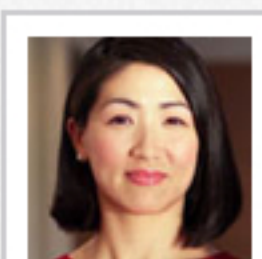
1. look in your Notifications link in the home page on C4 – anything there?
2. check your settings, (drop down under your log in name) – what's your email interrupt set to?

in response to...

Glenn Cloud I still don't get notified when someone comments on a post I commented on. Is that right? Or am I missing it

Content Types

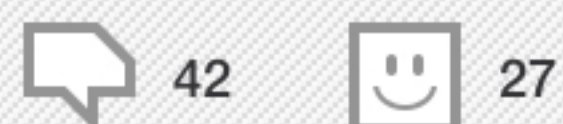
Status Messages



Gail Chao

[Day] at [time]

Praesent commodo cursus magna, vel scelerisque nisl consectetur et. Integer erat a ante venenatis dapibus posuere velit aliquet



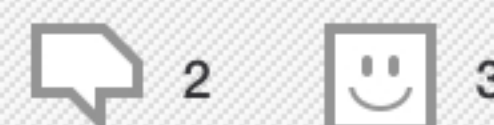
When a text-only status message reaches a certain threshold (TBD) of likes and comments, it should be displayed using this callout style using one of the callout colors and the typeface Janson.



Gail Chao

[Day] at [time]

Praesent commodo cursus magna, vel scelerisque nisl consectetur et. Integer erat a ante venenatis dapibus posuere velit aliquet.




When a text-only status message has not reached the call out threshold, display the text in Helvetica Neue.



Gail Chao

[Day] at [time]

Maecenas sed diam eget risus varius blandit sit amet non magna.

 **Filename.doc**



When a status message has text and a file attachment, the file attachment should be displayed below the text using a file type icon and the file name to represent the attachment. Display the file name in a smaller size and a heavier weight.

Status Messages



Gail Chao

[Day] at [time]



Filename.doc



2



3

When a status message is only a file attachment, the attachment should use a larger file type icon and a larger size text.



Gail Chao

[Day] at [time]



2



3

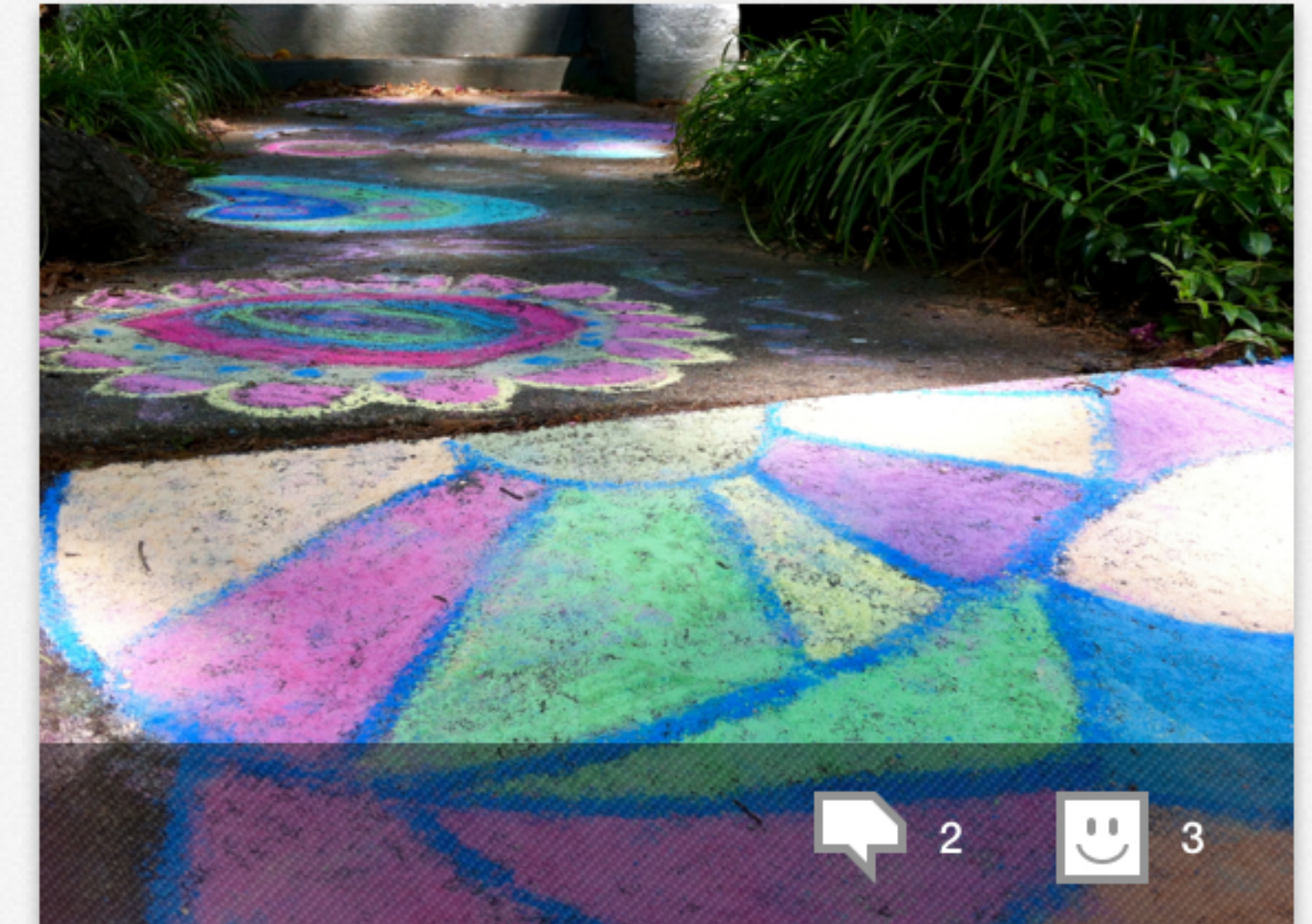
Praesent commodo cursus magna, vel scelerisque nisl consectetur et. Aenean eu leo quam. Pellentesque ornare sem lacinia quam venenatis vestibulum.

When a status message contains an image and text, the image should be displayed above the text at the full width of the column.



Gail Chao

[Day] at [time]



2



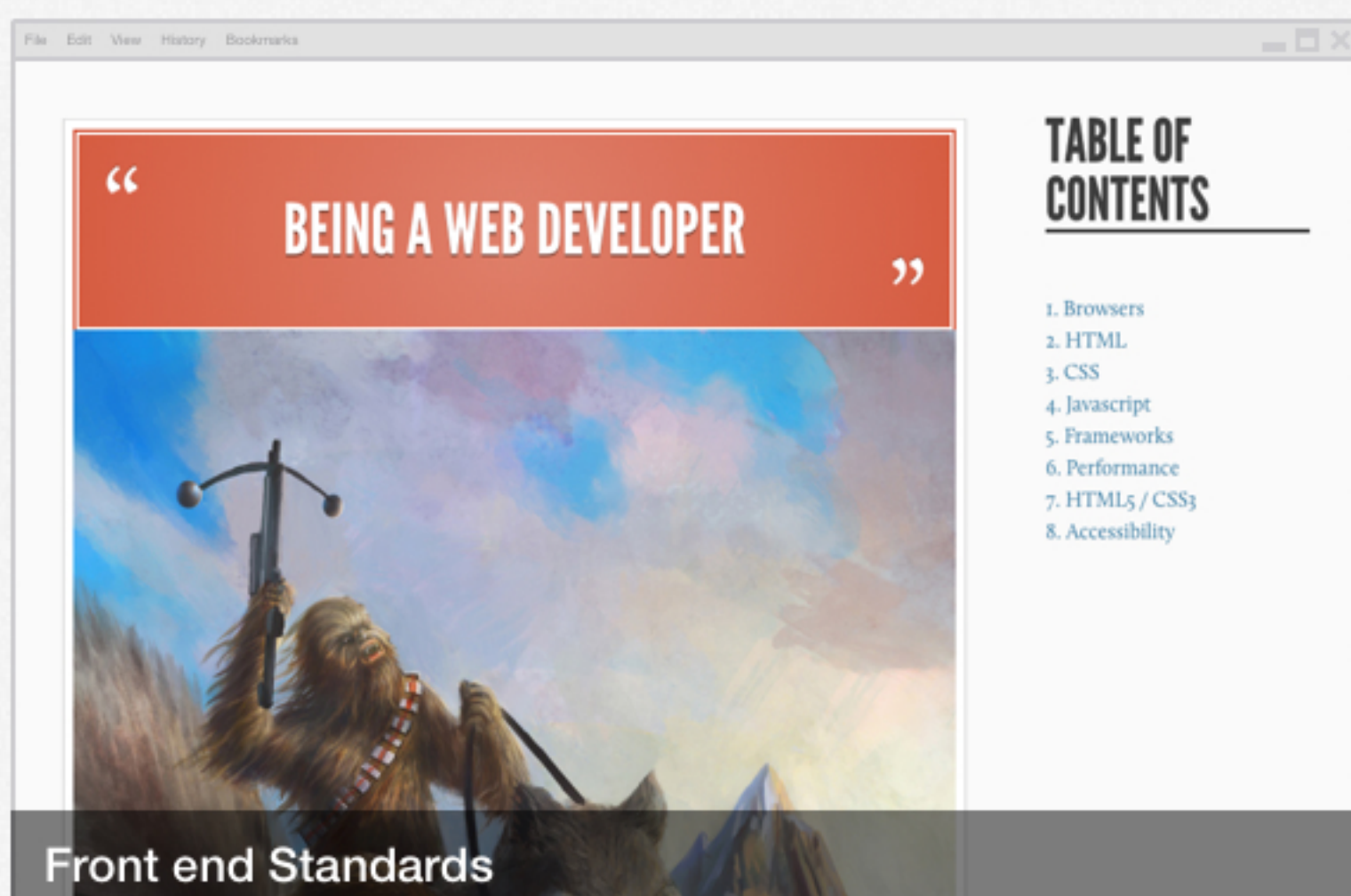
3

When a status message contains only an image, it should be displayed at the full width of the column, with the toolbar containing the comment and like buttons overlaid at the bottom of the photo.

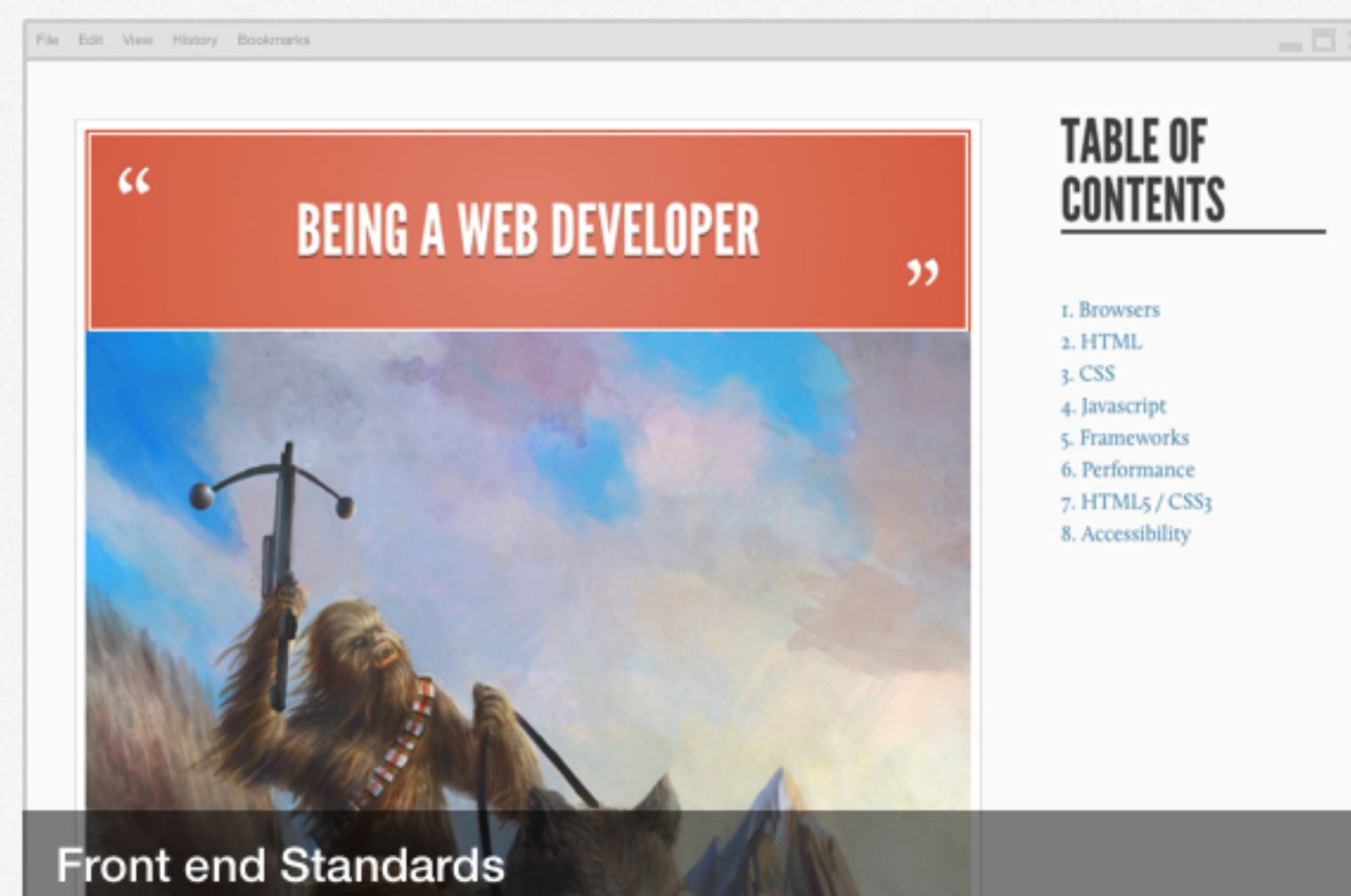
Status Messages



Gail Chao
[Day] at [time]




Gail Chao
[Day] at [time]



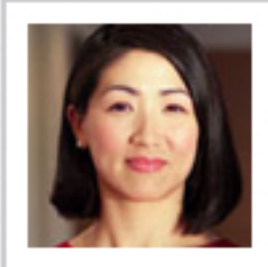
Maecenas sed diam eget risus varius blandit sit [amet non mafna](#). Donec sed odio dui. Curabitur blandit tempus porttitor.



When a status message contains a URL and text, we should show a URL preview above the text inside of a generic browser chrome with the page title in an overlay. If it is not possible to get a preview – for example, if the link needs authentication, the link preview should be omitted, and this post should be treated as text only

When a status message contains a URL but no accompanying text, we should show a URL preview inside of a generic browser chrome with the page title in an overlay. If it is not possible to get a preview – for example, if the link needs authentication, the link preview should be omitted, and this post should be treated as text only

Reposts



Gail Chao

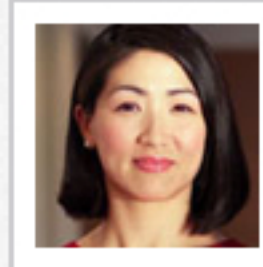
[Day] at [time]

🔄 **Praesent commodo cursus magna, vel scelerisque nisl consectetur et. Integer erat a ante venenatis dapibus posuere velit aliquet**

42 27

[Name] reposted **[Name]'s** message [date] at [time]

Reposts follow the same rules as the original post, but a repost icon precedes the text. Following the post is a statement showing who reposted it and when.



Gail Chao

[Day] at [time]

🔄 Praesent commodo cursus magna, vel scelerisque nisl consectetur et. Integer erat a ante venenatis dapibus posuere velit aliquet.

2 3

[Name] reposted **[Name]'s** message [date] at [time]

Reposts follow the same rules as the original post, but a repost icon precedes the text. Following the post is a statement showing who reposted it and when.



Gail Chao

[Day] at [time]

🔄 Maecenas sed diam eget risus varius blandit sit amet non magna.

Filename.doc

2 3

[Name] reposted **[Name]'s** message [date] at [time]



Reposts follow the same rules as the original post, but a repost icon precedes the text. Following the post is a statement showing who reposted it and when.

Reposts



Gail Chao

[Day] at [time]

  **Filename.doc**



2

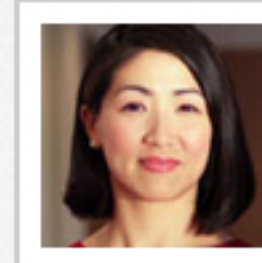


3

[Name] reposted **[Name]'s**
message [date] at [time]




Reposts follow the same rules as the original post, but a repost icon precedes the text. Following the post is a statement showing who reposted it and when.



Gail Chao

[Day] at [time]



 Praesent commodo cursus magna, vel scelerisque nisl consectetur et. Aenean eu leo quam. Pellentesque ornare sem lacinia quam venenatis vestibulum



2



3

[Name] reposted **[Name]'s**
message [date] at [time]

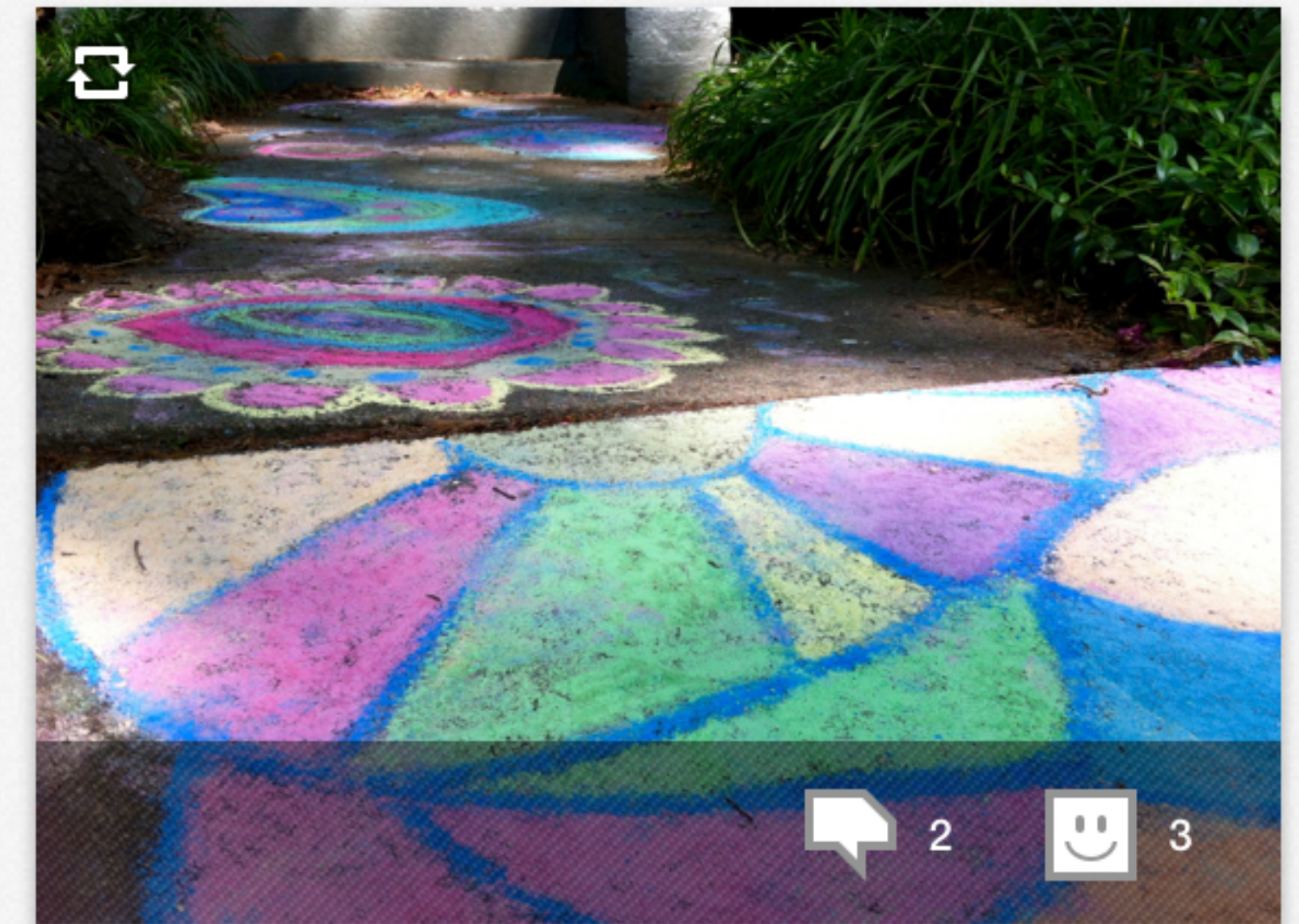


Reposts follow the same rules as the original post, but a repost icon precedes the text. Following the post is a statement showing who reposted it and when.



Gail Chao

[Day] at [time]

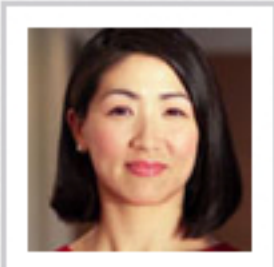


[Name] reposted **[Name]'s**
message [date] at [time]



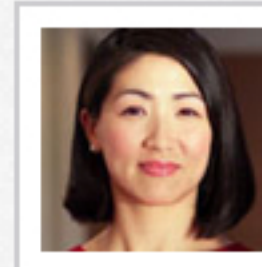
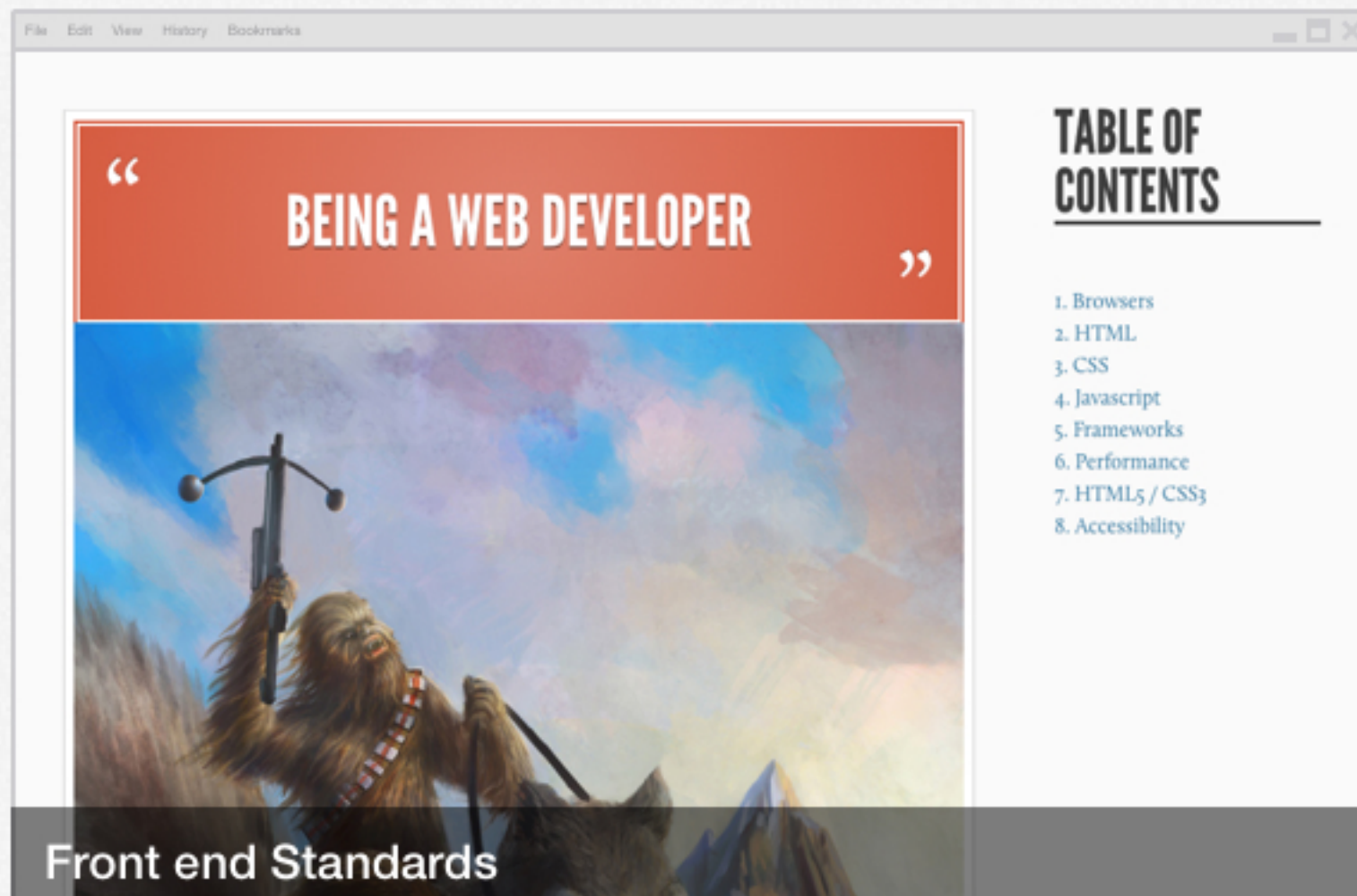
Reposts follow the same rules as the original post, but the photo has the repost icon on the top left corner. Following the post is a statement showing who reposted it and when.

Reposts



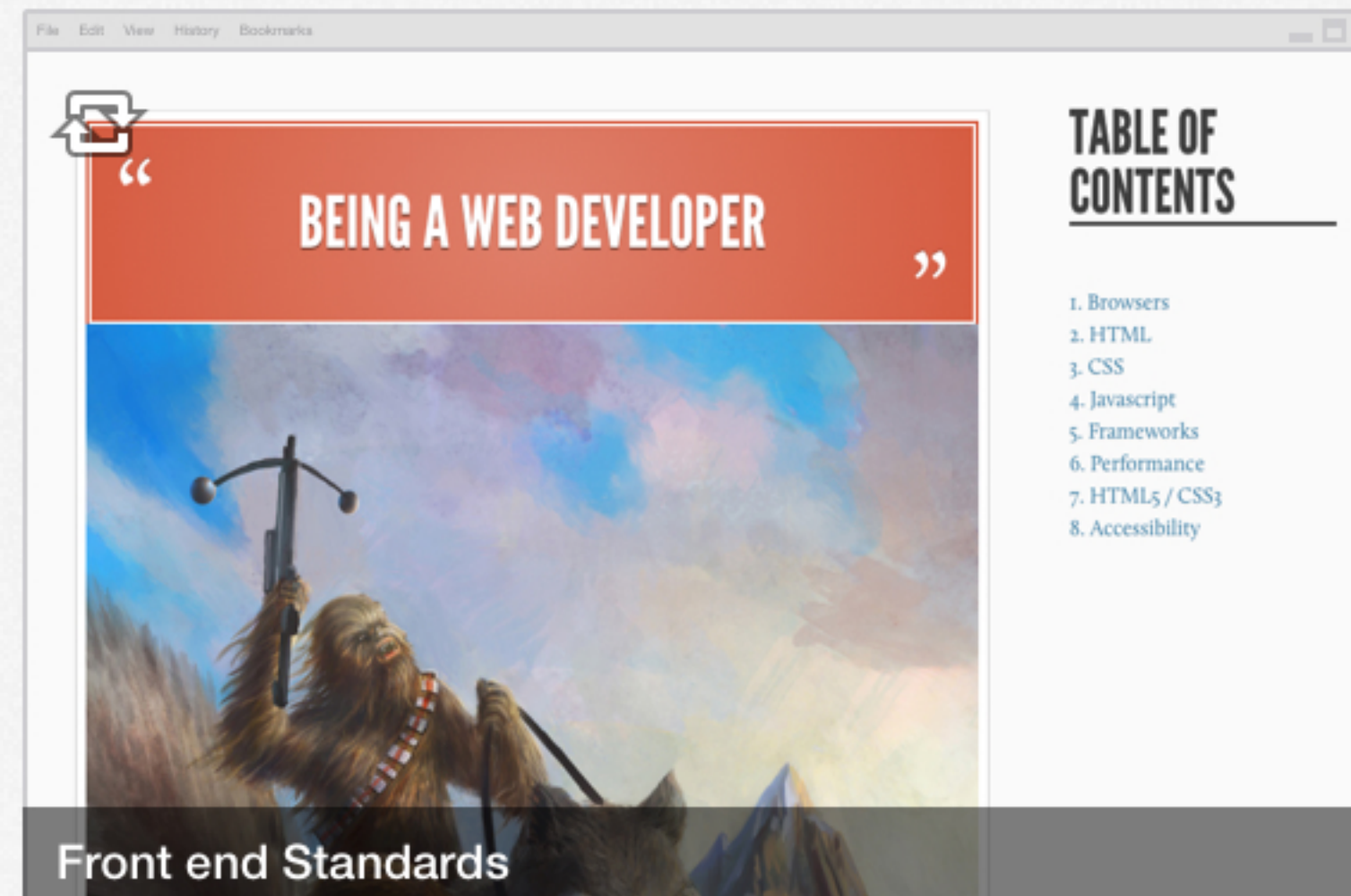
Gail Chao

[Day] at [time]



Gail Chao

[Day] at [time]



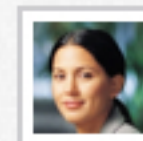
Maecenas sed diam eget risus varius blandit sit amet non mafna. Donec sed odio dui. Curabitur blandit tempus porttitor.



[Name] reposted [Name]'s message [date] at [time]



[Name] reposted [Name]'s message [date] at [time]



Reposts follow the same rules as the original post, but the URL preview has the repost icon on the top left corner. Following the post is a statement showing who reposted it and when.

Reposts follow the same rules as the original post, but a repost icon precedes the text. Following the post is a statement showing who reposted it and when.

Comments



Bill Ranney

[Day] at [time]

Praesent commodo cursus magna, vel scelerisque nisl consectetur et. Integer posuere erat a ante venenatis dapibus posuere inceptos semvelit aliquet.

in response to...

Gail Chao Donec ullamcorper nulla non metus auctor fringilla.



Bill Ranney

[Day] at [time]

Cras mattis consectetur purus sit amet fermentum.

in response to...

Gail Chao Morbi leo risus, porta ac consectetur ac, vestibulum st eros.

 **Filename.xls**



Bill Ranney

[Day] at [time]

Donnec ullamcorper nulla non metus auctor fringilla. Curabitur blandit tempus porttitor. Nulla vitae elit libero, a pharetra augue.

in response to...

 **Filename.zip**

A comment on a text-only post will show the full comment – regardless of length, with the original post shown below, capped at five lines before truncation. The name of the poster precedes the original post.

A comment on a post with text and a file attachment will follow the same rules as a text-only post, but will also have the file attachment, represented by a file type icon and the file name below the text post.

A comment on a post that contains only a file attachment – no text – will show the file attachment below the comment using a larger file type icon and larger text for the file name.

Comments



Bill Ranney

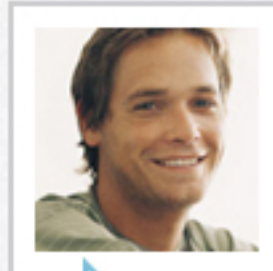
[Day] at [time]

Donnec ullamcorper nulla non metus auctor fringilla. Curabitur blandit tempus porttitor. Nulla vitae elit libero, a pharetra augue.

in response to...



Gail Chao Sed posuere consectetur est at lobortis



Bill Ranney

[Day] at [time]

Fusce dapibus!

in response to...

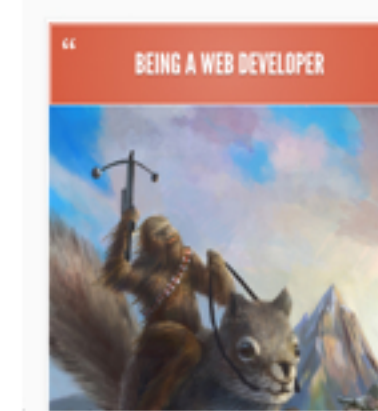


Bill Ranney

[Day] at [time]

Etiam porta sem malesuada magna mollis euismod. Donec sed odio dui. Praesent commodo cursus magna, vel scelerisque nisl consectetur et.

in response to...



Gail Chao Aenean acinia bibendum nulla sed consectetur

A comment on a post with a photo attachment will follow the same rules as a text-only post. In the original post area, display with the photo on the left and the text portion of the post to the right. Cap the text at five lines. Should the text section be taller than the photo, the text can wrap around the photo.

A comment on a post with a photo, but no text will show the photo below the comment text.

A comment on a post with a link and text will display a preview of the linked page. If it is not possible to get a preview – for example, if the link needs authentication – the link preview should be omitted, and this post should be treated as text only. Note that even though Connections links require authentication, we should still be able to show those previews since the user is already authenticated into Connections.

Comments



Bill Ranney

[Day] at [time]

Etiam porta sem malesuada magna mollis euismod. Donec sed odio dui. Praesent commodo cursus magna, vel scelerisque nisl consectetur et.

in response to...

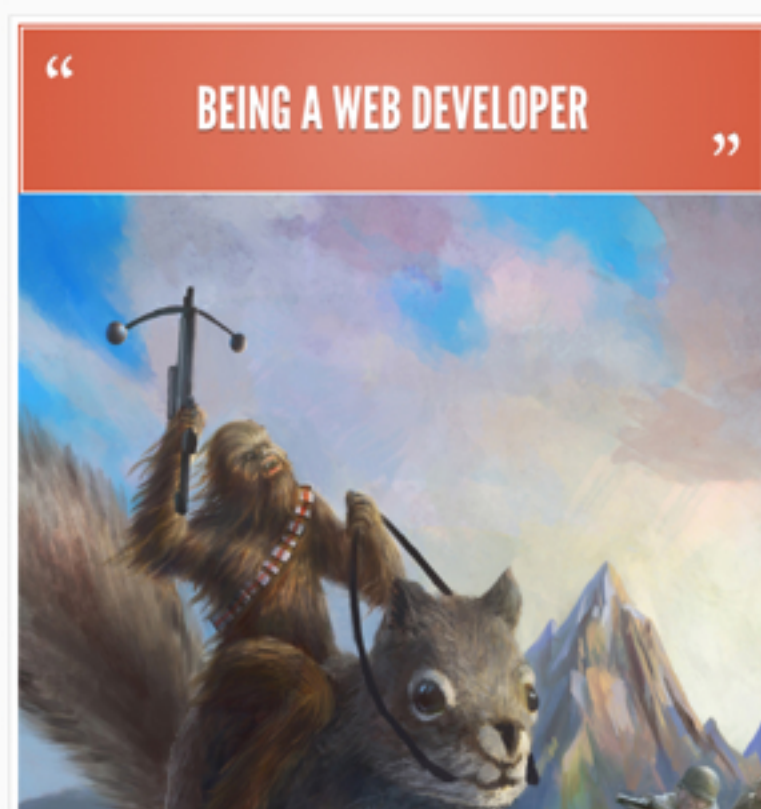


TABLE OF CONTENTS


1. Browsers
2. HTML
3. CSS
4. JavaScript
5. Frameworks
6. Performance
7. HTML5 / CSS3
8. Accessibility

A comment on a post with a link and no text will display a preview of the linked page. If it is not possible to get a preview – for example, if the link needs authentication – we should follow the same rules as a link with text.

Reposts




Praesent commodo cursus magna, vel scelerisque nisl consectetur et. Integer erat a ante venenatis dapibus posuere velit aliquet

[Name] liked [Name]'s message [date] at [time] 

Likes follow the same rules as the original post, but there is no name or profile picture at the top; instead, a Like icon is shown. Following the post is a statement indicating who liked the post and when.




Praesent commodo cursus magna, vel scelerisque nisl consectetur et. Integer erat a ante venenatis dapibus posuere velit aliquet.


[Name] liked [Name]'s message [date] at [time] 

Likes follow the same rules as the original post, but there is no name or profile picture at the top; instead, a Like icon is shown. Following the post is a statement indicating who liked the post and when.



Maecenas sed diam eget risus varius blandit sit amet non magna.

 Filename.doc

[Name] liked [Name]'s message [date] at [time] 

Likes follow the same rules as the original post, but there is no name or profile picture at the top; instead, a Like icon is shown. Following the post is a statement indicating who liked the post and when.

Reposts



Filename.doc

[Name] liked [Name]'s
message [date] at [time]



Likes follow the same rules as the original post, but there is no name or profile picture at the top; instead, a Like icon is shown. Following the post is a statement indicating who liked the post and when.



Praesent commodo cursus magna, vel scelerisque nisl consectetur et. Aenean eu leo quam. Pellentesque ornare sem lacinia quam venenatis vestibulum

[Name] liked [Name]'s
message [date] at [time]



Likes follow the same rules as the original post, but there is no name or profile picture at the top; instead, a Like icon is shown. The photo is slightly inset and has the Like icon overlap its top left corner. Following the post is a statement indicating who liked the post and when.

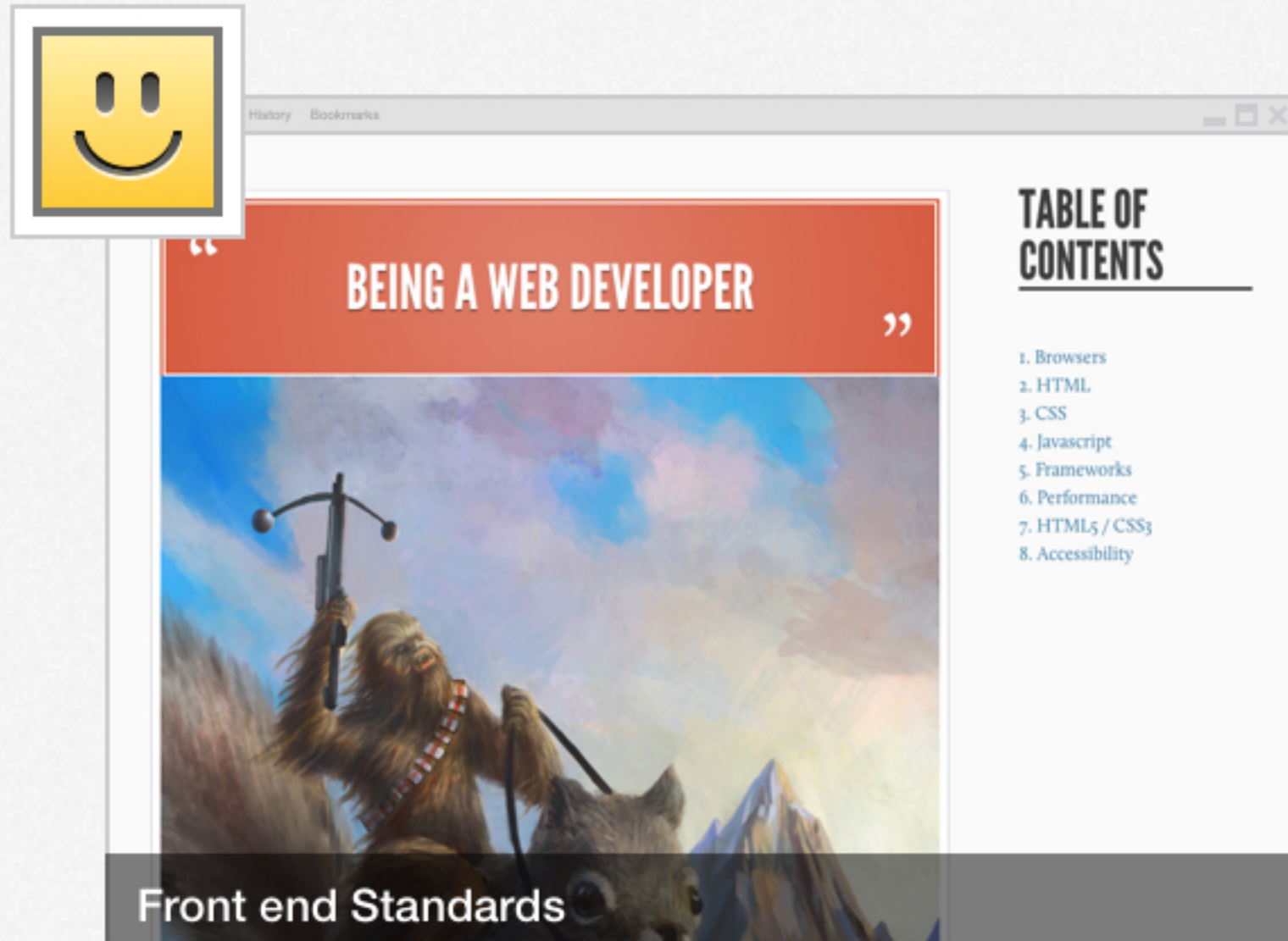


[Name] liked [Name]'s
message [date] at [time]




Likes follow the same rules as the original post, but there is no name or profile picture at the top; instead, a Like icon is shown. The photo is slightly inset and has the Like icon overlap its top left corner. Following the post is a statement indicating who liked the post and when.

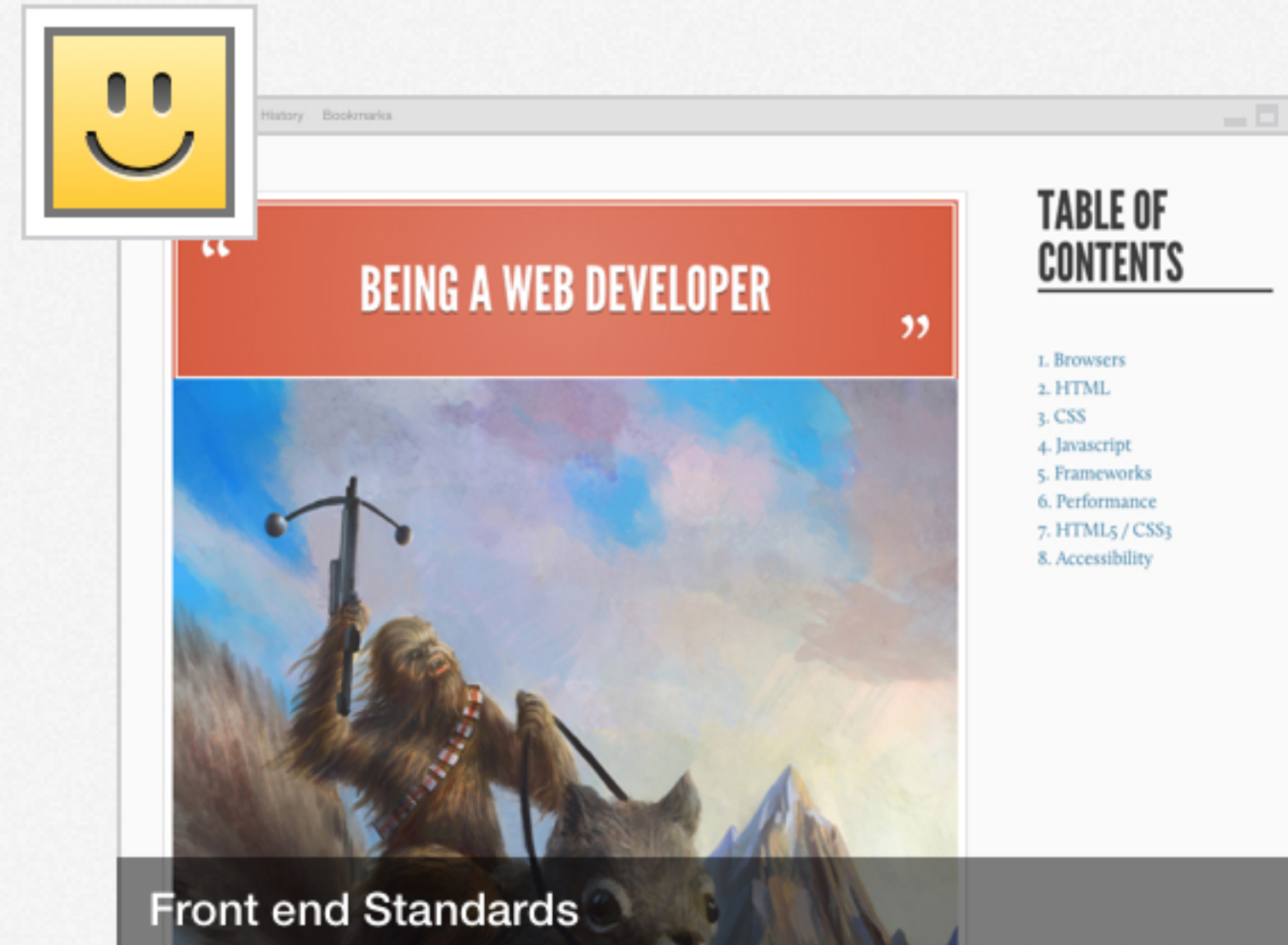
Reposts




Maecenas sed diam eget risus varius blandit sit [amet non mafna](#). Donec sed odio dui. Curabitur blandit tempus porttitor.

[Name] liked **[Name]**'s message [date] at [time] 

Likes follow the same rules as the original post, but there is no name or profile picture at the top; instead, a Like icon is shown. The URL preview is slightly inset and has the Like icon overlap it's top left corner. Following the post is a statement indicating who liked the post and when.



[Name] reposted **[Name]**'s message [date] at [time] 

Likes follow the same rules as the original post, but there is no name or profile picture at the top; instead, a Like icon is shown. The URL preview is slightly inset and has the Like icon overlap it's top left corner. Following the post is a statement indicating who liked the post and when.